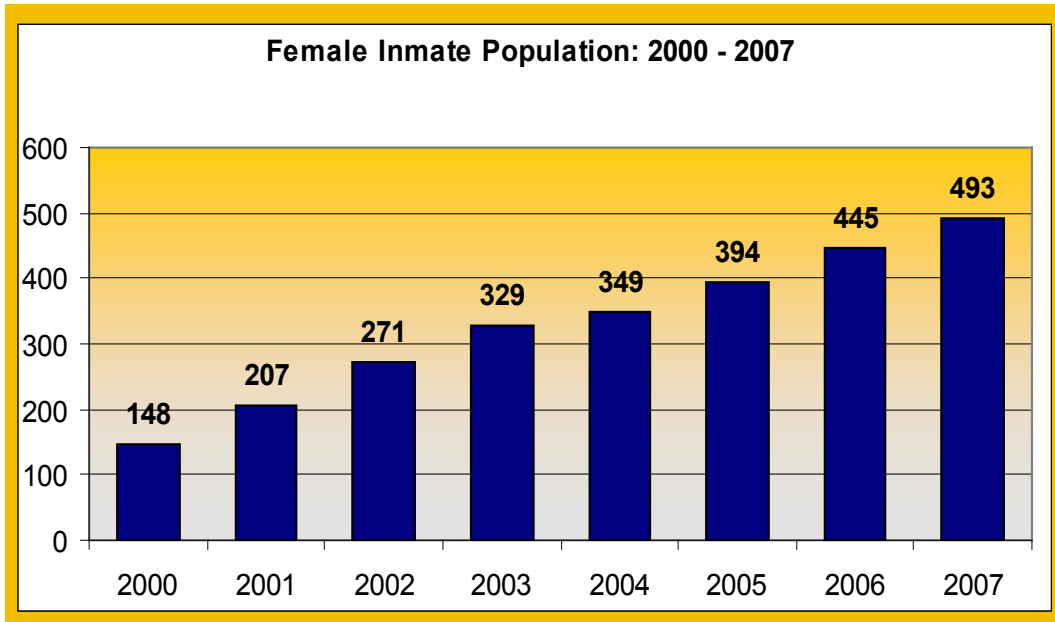


WV Division of Corrections Female Offenders

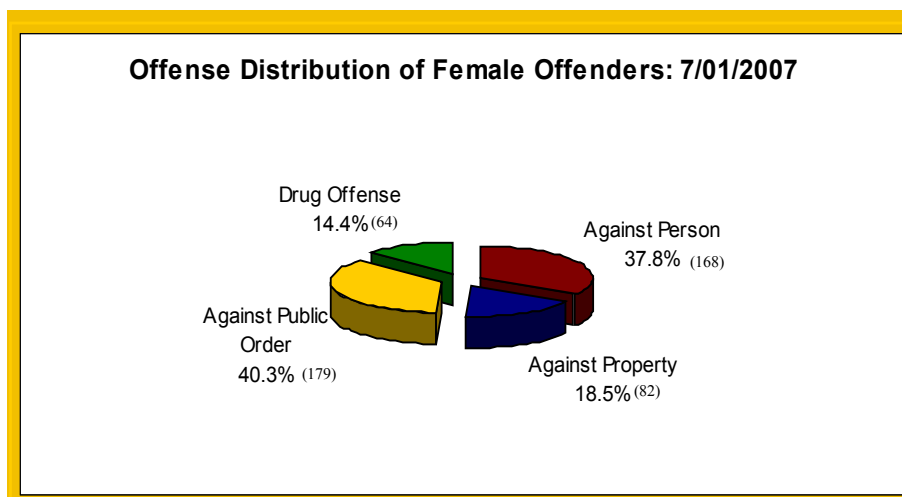
Data Sheet

Female offenders make up just over 10% of the WV Division of Corrections inmate population and this number is steadily increasing. The following statistics pertain to female offenders housed in WV DOC facilities as of July 2007.

These statistics do not include WV DOC inmates housed in Regional Jails.



In 2000, there were 148 female offenders making up 5% of the WV prison population; today that number has more than tripled to 493, and accounts for a little over 10% of the total offender population in the state.

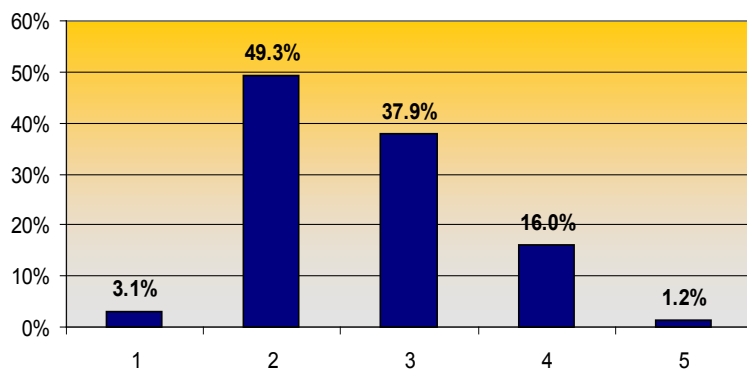


Crimes Against the Public Order, such as credit card fraud, forgery, DUI, Etc..., was the largest category of crimes committed by WV DOC female offenders, followed closely by Crimes Against the Person.

WV Division of Corrections Female Offenders

Data Sheet

Classification Distribution of Female Inmates: 7/1/2007

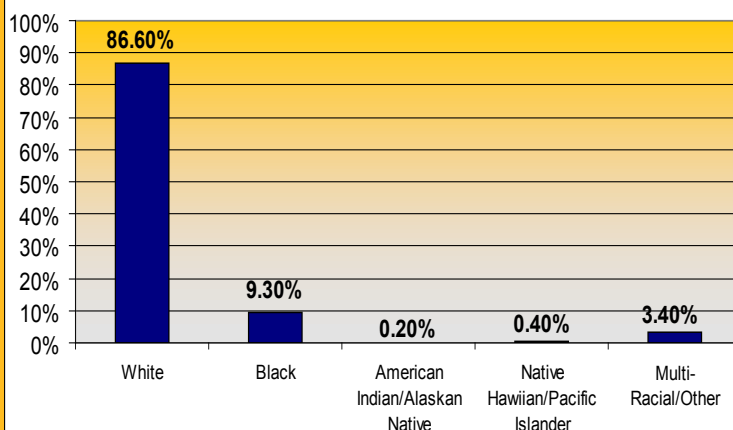


Level 1--Community Security Level
 Level 2--Minimum Security Level
 Level 3--Medium Security Level
 Level 4--Close Security Level
 Level 5--Maximum Security Level

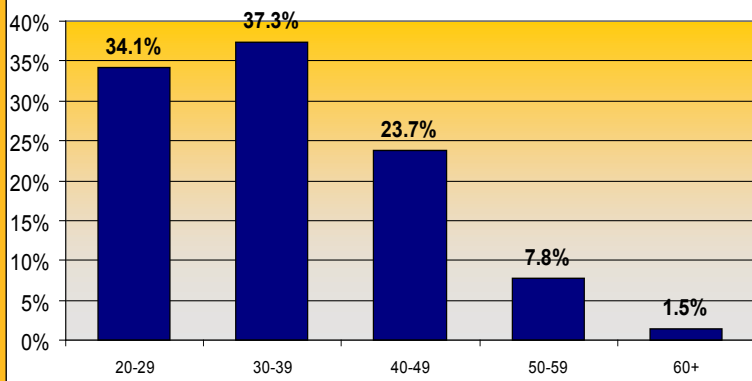
In July 2007, almost 50% of female offenders were classified as Minimum Security Level.

As of July 2007, 87% of female offenders in WV were Caucasian, while 9% were African American.

Female Inmates by Race: July 2007



Age Distribution of Female Inmates: 7/1/2007



Over 70% of female offenders sentenced to the WV Division of Corrections are between the ages of 20-39.