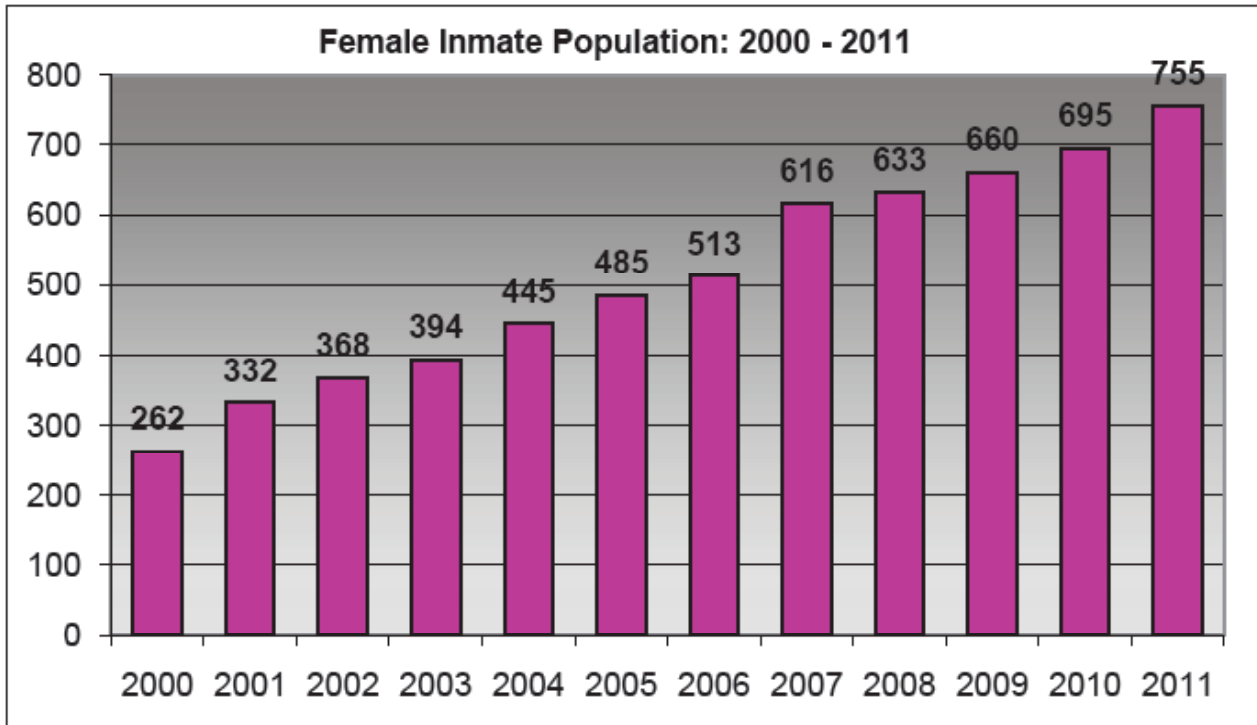


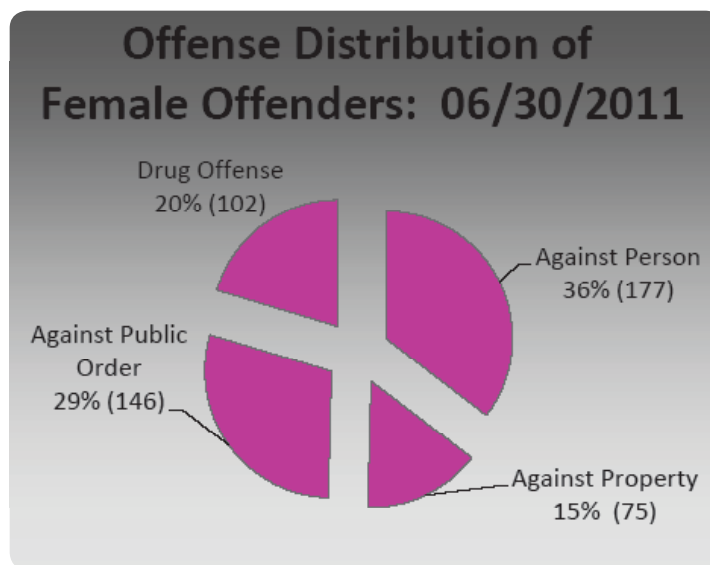


WV Division of Corrections Female Offenders Data Sheet 2011

Female offenders currently make up 11% of the WV Division of Corrections inmate population. The following statistics pertain to female offenders housed in WV DOC facilities only, except the first chart titled "Female Inmate Population", which includes those housed in Regional Jails.



The female population has increased by over 65% since 2000, going from 262 to 755 in 2011. This amounts to an average increase of about 10% per year in the last 11 years.

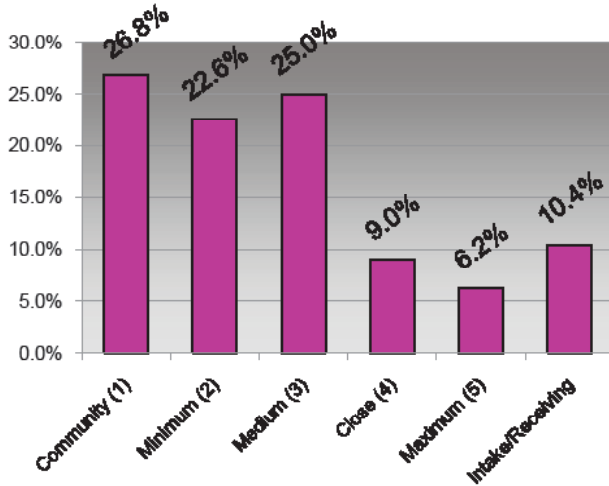


Crimes Against the Person (Ex: murder, malicious assault, robbery), was the largest category of crimes committed by WV DOC female offenders as of Midyear 2011, followed closely by Crimes Against Public Order.



WV Division of Corrections Female Offenders Data Sheet 2011

Classification Distribution of Female Inmates: 6/30/2011

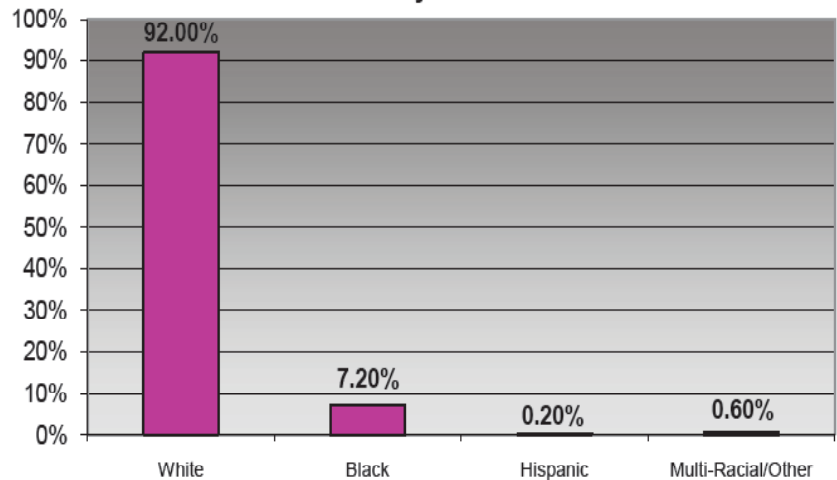


Level 1--Community Security Level
 Level 2--Minimum Security Level
 Level 3--Medium Security Level
 Level 4--Close Security Level
 Level 5--Maximum Security Level
 Intake/Receiving--Inmates who have not been classified

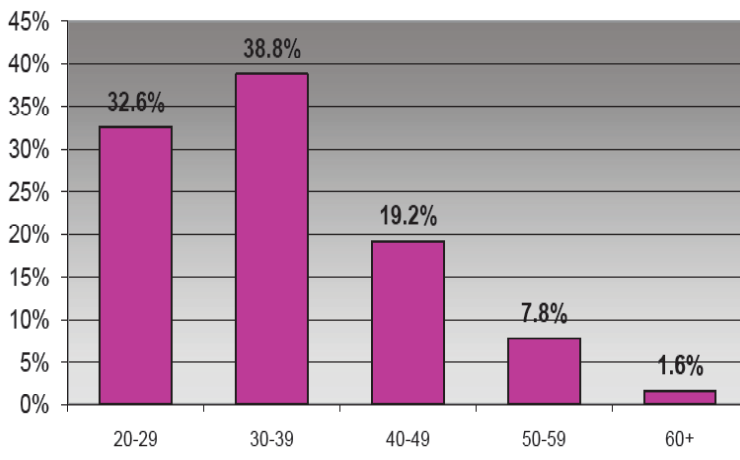
In July 2011, nearly 50% of female offenders were classified as Minimum or Community Security Level.

As of July 2011, 92% of female offenders in West Virginia were Caucasian, while just a little over 7% were African American.

Female Inmates by Race: 06/30/2011



Age Distribution of Female Inmates: 06/30/2011



The majority of female inmates (over 70%) are under 40 years of age.